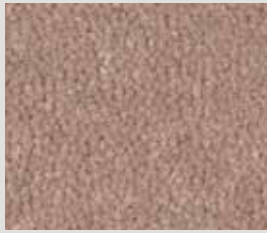


# Woolclass



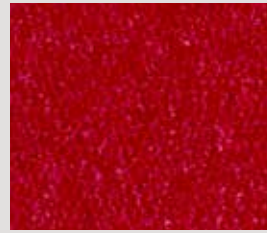
▲ SB: LWCL.0883 | 400 & 500 cm



▲ SB: LWCL.0422 | 400 & 500 cm



▲ SB: LWCL.0110 | 400 & 500 cm



▲ SB: LWCL.0123 | 400 & 500 cm



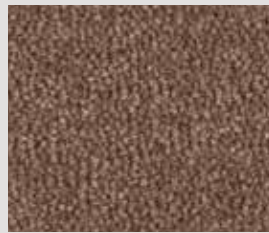
▲ SB: LWCL.0133 | 400 & 500 cm



▲ SB: LWCL.0432 | 400 & 500 cm



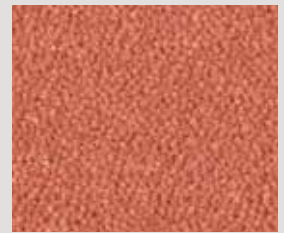
▲ SB: LWCL.0263 | 400 & 500 cm



▲ SB: LWCL.0273 | 400 & 500 cm



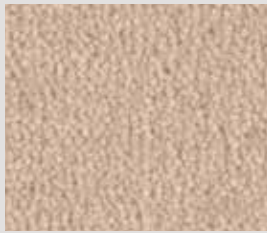
▲ SB: LWCL.0093 | 400 & 500 cm



▲ SB: LWCL.0163 | 400 & 500 cm



▲ SB: LWCL.0253 | 400 & 500 cm



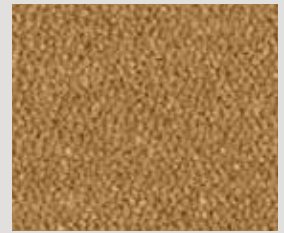
▲ SB: LWCL.0230 | 400 & 500 cm



▲ SB: LWCL.0275 | 400 & 500 cm



▲ SB: LWCL.0173 | 400 & 500 cm



▲ SB: LWCL.0383 | 400 & 500 cm



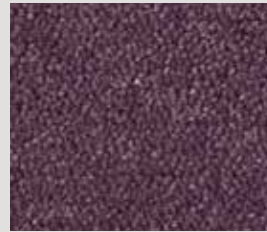
▲ SB: LWCL.0250 | 400 & 500 cm



▲ SB: LWCL.0220 | 400 & 500 cm



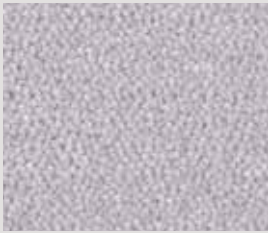
▲ SB: LWCL.0283 | 400 & 500 cm



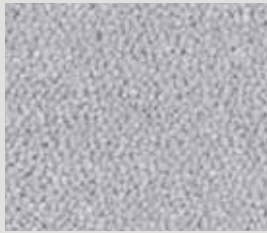
▲ SB: LWCL.0013 | 400 & 500 cm



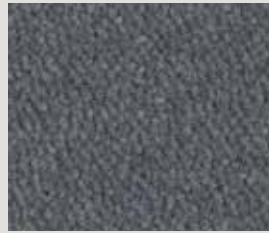
▲ SB: LWCL.0673 | 400 & 500 cm



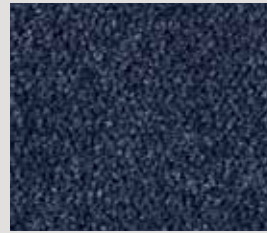
▲ SB: LWCL.0873 | 400 & 500 cm



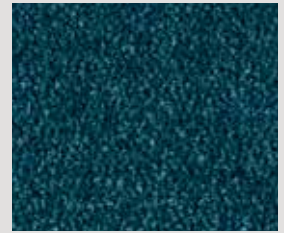
▲ SB: LWCL.0753 | 400 & 500 cm



▲ SB: LWCL.0821 | 400 & 500 cm



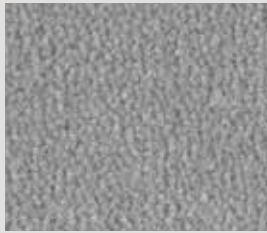
▲ SB: LWCL.0793 | 400 & 500 cm



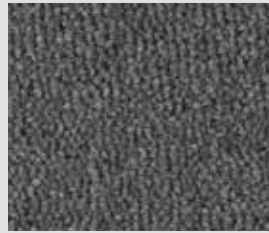
▲ SB: LWCL.0713 | 400 & 500 cm



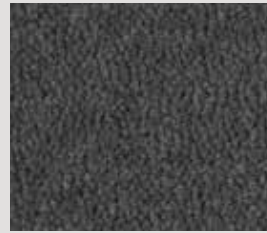
▲ SB: LWCL.0870 | 400 & 500 cm



▲ SB: LWCL.0850 | 400 & 500 cm



▲ SB: LWCL.0843 | 400 & 500 cm



▲ SB: LWCL.0830 | 400 & 500 cm



▲ SB: LWCL.0803 | 400 & 500 cm

# Woolclass

<b>Secondary Backing</b> Rugtype • Envers Rücken • Sottofondo • Reverso	<b>SB</b>
<b>Manufacturing process</b> Fabricagemethode • Technique de fabrication Herstellungstyp • Tecnica di fabbricazione • Técnica de fabricación	<b>tufted, 1/10" saxony</b>
<b>Pile composition</b> Poolsamenstelling • Nature du velours Polmaterial • Composizione felpa • Composición de pelo	<b>WO</b>
<b>Primary backing</b> Tuftdoek • Premier dossier Trägermaterial • Tela di supporto • Tela de soporte	<b>woven</b>
<b>Width</b> Breedte • Largeur Breite • Altezza • Ancho	<b>± 400 &amp; 500 cm</b>
<b>Effective pile height</b> Nuttige poolhoogte • Hauteur de velours utile Tatsächliche Florhöhe • Spessore felpa utile • Altura de pelo	<b>± 6,6 mm</b>
<b>Total height</b> Totale dikte • Hauteur totale Gesamthöhe • Spessore totale • Altura total	<b>± 8,8 mm</b>
<b>Number of knots/sqm</b> Aantal noppen/m <sup>2</sup> • Nombre de points/m <sup>2</sup> Noppenzahl/m <sup>2</sup> • Numero di punti/mq • Puntos de pelo/m <sup>2</sup>	<b>± 200.940</b>
<b>Pile weight/sqm</b> Poolinzetgewicht/m <sup>2</sup> • Poids mis en oeuvre/m <sup>2</sup> Poleinsatzgewicht/m <sup>2</sup> • Peso felpa/mq • Peso de pelo/m <sup>2</sup>	<b>± 1.365 gr</b>
<b>Total weight/sqm</b> Totaal gewicht/m <sup>2</sup> • Poids total/m <sup>2</sup> Gesamtwicht/m <sup>2</sup> • Peso totale/m <sup>2</sup> • Peso total/m <sup>2</sup>	<b>± 2.550 gr</b>

<b>EN 13501-1 Fire behaviour</b> Brandgedrag • Comportement au feu Brennverhalten • Reazione al fuoco • Resistencia al fuego	<b>B<sub>fl</sub>-s1</b>
<b>EN 1307-2004 Classification</b> Classificatie • Classification Klassifizierung • Classificazione • Clasificación al uso	<b>Class 23 + 32 Domestic Heavy Commercial General</b>
<b>DIN 52612 Thermal retention</b> Warmtedoorlaatweerstand • Résistivité thermique Wärmedurchlaßwiderstand • Resistenza termica	<b>± 0,136 m<sup>2</sup>/kW</b>
<b>TOG rating</b>	<b>± 1,36</b>
<b>ISO 105 B02 2000 Lightfastness</b> Lichtechtheid • Solidité à la lumière Lichtechtheit • Solidità colori alla luce • Solidez del color a la luz	<b>≥ 5 - 6</b>
<b>ISO 105 E01 2002 Waterfastness change in colour</b> Waterechtheid verkleuring • Solidité à l'eau changement couleur Wasserechtheit Änderung der Farbe • Solidità colori all'acqua cambio colore Solidez color al agua cambio de color	<b>≥ 4</b>
<b>ISO 105 E01 2002 Waterfastness staining</b> Waterechtheid uitbloeding • Solidité à l'eau dégorgement Wasserechtheit anbluten • Solidità colori all'acqua sfumatura colore Solidez color al agua pérdida de color	<b>≥ 4</b>
<b>ISO 105 X12 2001 Rubbingfastness dry</b> Wrijftechtheid droog • Solidité au frottement sec Reibungechtheit trocken • Solidità colori allo sfregamento a secco Solidez del color a la frotación en seco	<b>≥ 4</b>
<b>ISO 105 X12 2001 Rubbingfastness wet</b> Wrijftechtheid nat • Solidité au frottement humide Reibungechtheit nass • Solidità colori allo sfregamento umido Solidez del color a la frotación en húmedo	<b>≥ 4</b>

(±) These details are approximate. Complete specification details and associated certificates together with tolerances applying to the above can be provided upon request. We reserve the right to improve technical specifications without prior notice. Due to method of manufacture perfect pattern and/or colour matching cannot be guaranteed. In cut-pile carpeting, in rare cases, shading/pile reversal may occur without affecting its fitness for use. Shading/pile reversal can not be considered as a manufacturing or a material defect and will not affect the durability of the carpet. For other languages see: [www.lano.com](http://www.lano.com)

