

# Queens



▲ SB: LQUE.0790 | 400 cm



▲ SB: LQUE.0760 | 400 cm



▲ SB: LQUE.0850 | 400 cm



▲ SB: LQUE.0830 | 400 cm



▲ SB: LQUE.0800 | 400 cm



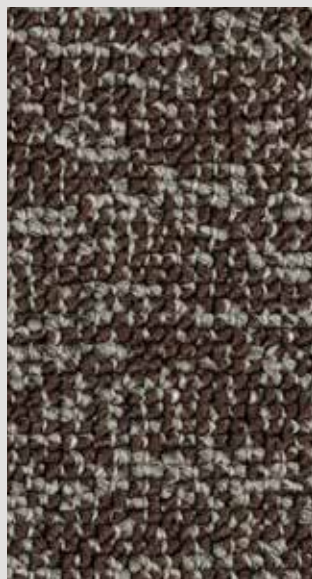
▲ SB: LQUE.0410 | 400 cm



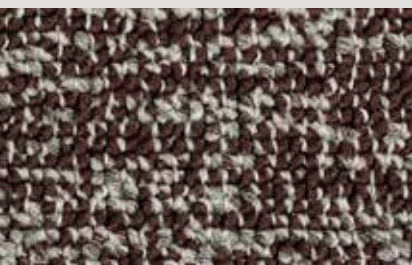
▲ SB: LQUE.0630 | 400 cm



▲ SB: LQUE.0810 | 400 cm



▲ SB: LQUE.0210 | 400 cm



▲ SB: LQUE.0200 | 400 cm



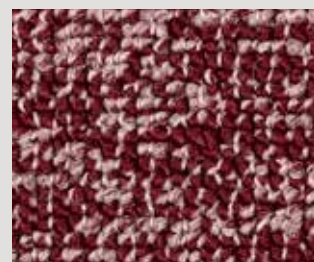
▲ SB: LQUE.0270 | 400 cm



▲ SB: LQUE.0260 | 400 cm



▲ SB: LQUE.0310 | 400 cm



▲ SB: LQUE.0100 | 400 cm

# Queens

<b>Secondary Backing</b> Rugtype • Envers Rücken • Sottofondo	<b>SB</b>
<b>Manufacturing process</b> Fabricagemethode • Technique de fabrication Herstellungsart • Tecnica di fabbricazione	<b>1/10" Loop pile</b>
<b>Pile composition</b> Poolsamenstelling • Nature du velours Polmateriaal • Composizione felpa	<b>PA</b>
<b>Primary backing</b> Tuftdoek • Premier dossier Trägermaterial • Tela di supporto	<b>woven</b>
<b>Width</b> Breedte • Largeur Breite • Altezza	<b>± 400 cm</b>
<b>Effective pile height</b> Nuttige poolhoogte • Hauteur de velours utile Tatsächliche Florhöhe • Spessore felpa utile	<b>± 4,0 mm</b>
<b>Total height</b> Totale dikte • Hauteur totale Gesamthöhe • Spessore totale	<b>± 6,2 mm</b>
<b>Number of knots/sqm</b> Aantal noppen/m <sup>2</sup> • Nombre de points/m <sup>2</sup> Noppenzahl/m <sup>2</sup> • Numero di punti/mq	<b>± 137.900</b>
<b>Pile weight/sqm</b> Poolinzetgewicht/m <sup>2</sup> • Poids mis en oeuvre/m <sup>2</sup> Poleinsatzgewicht/m <sup>2</sup> • Peso felpa/mq	<b>± 750 gr</b>
<b>Total weight/sqm</b> Totaal gewicht/m <sup>2</sup> • Poids total/m <sup>2</sup> Gesamtwegicht/m <sup>2</sup> • Peso totale/m <sup>2</sup>	<b>± 1.900 gr</b>

<b>EN 13501-1 Fire behaviour</b> Brandgedrag • Comportement au feu Brennverhalten • Reazione al fuoco	<b>B<sub>fl</sub>-s1</b>
<b>EN 1307-2004 Classification</b> Classificatie • Classification Klassifizierung • Classificazione	<b>Class 33 Commercial Heavy</b>
<b>ISO 140/8 1997 Impact sound insulation</b> Contactgeluidsisolatie • Isolation aux bruits d'impact Trittschallverbesserungsmaß • Miglioramento acustico	<b>± 20 dB</b>
<b>DIN 52612 Thermal retention</b> Warmteoorlaatweerstand • Résistivité thermique Wärmedurchlaßwiderstand • Resistenza termica	<b>± 0,11 m<sup>2</sup>/kW</b>
<b>TOG rating</b>	<b>± 1,1</b>
<b>ISO 105 B02 2000 Lightfastness</b> Lichtechtheid • Solidité à la lumière Lichtechtheit • Solidità colori alla luce	<b>≥ 5</b>
<b>ISO 105 E01 2002 Waterfastness change in colour</b> Waterechtheid verkleuring • Solidité à l'eau changement couleur Wasserechtheit Änderung der Farbe • Solidità colori all'acqua cambio colore	<b>≥ 3-4</b>
<b>ISO 105 E01 2002 Waterfastness staining</b> Waterechtheid uitbloeding • Solidité à l'eau dégorgeement Wasserechtheit anbluten • Solidità colori all'acqua sfumatura colore	<b>≥ 2-3</b>
<b>ISO 105 X12 2001 Rubbingfastness dry</b> Wrijftechtheid droog • Solidité au frottement sec Reibungechtheit trocken • Solidità colori allo sfregamento a secco	<b>≥ 3-4</b>
<b>ISO 105 X12 2001 Rubbingfastness wet</b> Wrijftechtheid nat • Solidité au frottement humide Reibungechtheit nass • Solidità colori allo sfregamento umido	<b>≥ 3</b>

(±) These details are approximate. Complete specification details and associated certificates together with tolerances applying to the above can be provided upon request. We reserve the right to improve technical specifications without prior notice. Due to method of manufacture perfect pattern and/or colour matching cannot be guaranteed. In cut-pile carpeting, in rare cases, shading/pile reversal may occur without affecting its fitness for use. Shading/pile reversal can not be considered as a manufacturing or a material defect and will not affect the durability of the carpet. For other languages see: [www.lano.com](http://www.lano.com)

