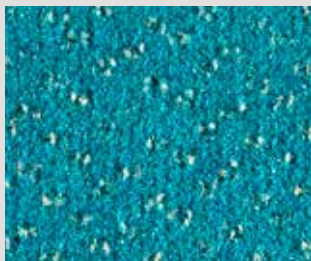
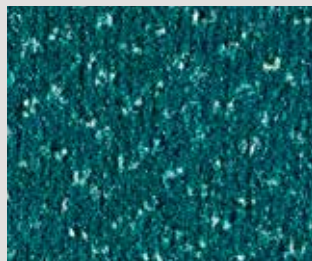


Optima Essential



▲ SB: LOPS.0670 | 400 cm



▲ SB: LOPS.0690 | 400 cm



▲ SB: LOPS.0620 | 400 cm



▲ SB: LOPS.0100 | 400 cm



▲ SB: LOPS.0770 | 400 cm



▲ SB: LOPS.0840 | 400 cm



▲ SB: LOPS.0010 | 400 cm



▲ SB: LOPS.0120 | 400 cm



▲ SB: LOPS.0720 | 400 cm



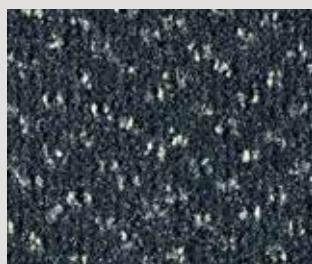
▲ SB: LOPS.0830 | 400 cm



▲ SB: LOPS.0320 | 400 cm



▲ SB: LOPS.0790 | 400 cm



▲ SB: LOPS.0820 | 400 cm



▲ SB: LOPS.0250 | 400 cm



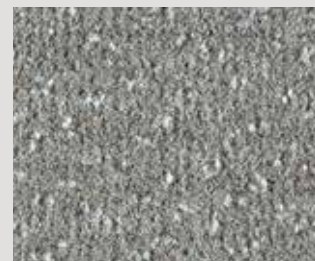
▲ SB: LOPS.0200 | 400 cm



▲ SB: LOPS.0800 | 400 cm



▲ SB: LOPS.0220 | 400 cm



▲ SB: LOPS.0260 | 400 cm

Optima Essential

Secondary Backing	SB
Rugtype • Envers Rücken • Sottofondo • Reverso	
Manufacturing process	1/10" cut pile
Fabricagemethode • Technique de fabrication Herstellungsverfahren • Tecnica di fabbricazione • Técnica de fabricación	
Pile composition	PA
Poolsamenstelling • Nature du velours Polmaterial • Composizione felpa • Composición de pelo	
Primary backing	woven
Tuftdoek • Premier dossier Trägermaterial • Tela di supporto • Tela de soporte	
Width	± 400 cm
Breedte • Largeur Breite • Altezza • Ancho	
Effective pile height	± 3,5 mm
Nuttige poolhoogte • Hauteur de velours utile Tatsächliche Florhöhe • Spessore felpa utile • Altura de pelo	
Total height	± 6,0 mm
Totale dikte • Hauteur totale Gesamthöhe • Spessore totale • Altura total	
Number of knots/sqm	± 189.120
Aantal noppen/m ² • Nombre de points/m ² Noppenzahl/m ² • Numero di punti/mq • Puntos de pelo/m ²	
Pile weight/sqm	± 600 gr
Poolinzetgewicht/m ² • Poids mis en oeuvre/m ² Poleinsatzgewicht/m ² • Peso felpa/mq • Peso de pelo/m ²	
Total weight/sqm	± 1.740 gr
Totaal gewicht/m ² • Poids total/m ² Gesamtwicht/m ² • Peso totale/m ² • Peso total/m ²	
EN 13501-1 Fire behaviour	B_f-s1
Brandgedrag • Comportement au feu Brennverhalten • Reazione al fuoco • Resistencia al fuego	
EN 1307-2004 Classification	Class 32 Commercial General
Classificatie • Classification Klassifizierung • Classificazione • Clasificación al uso	

ISO 140/8 1997 Impact sound insulation	± 10 dB
Contactgeluidsisolatie • Isolation aux bruits d'impact Trittschallverbesserungsmaß • Miglioramento acustico	
DIN 52612 Thermal retention	± 0,11 m²/kW
Warmteoorlaatweerstand • Résistivité thermique Wärmedurchlaßwiderstand • Resistenza termica	
TOG rating	± 1,1
ISO 105 B02 2000 Lightfastness	≥ 5
Lichtechtheid • Solidité à la lumière Lichtechtheit • Solidità colori alla luce • Solidez del color a la luz	
ISO 105 E01 2002 Waterfastness change in colour	≥ 3 - 4
Waterechtheid verkleuring • Solidité à l'eau changement couleur Wasserechtheit Änderung der Farbe • Solidità colori all'acqua cambio colore Solidez color al agua cambio de color	
ISO 105 E01 2002 Waterfastness staining	≥ 2 - 3
Waterechtheid uitbloeding • Solidité à l'eau dégorgeement Wasserechtheit anbluten • Solidità colori all'acqua sfumatura colore Solidez color al agua pérdida de color	
ISO 105 X12 2001 Rubbingfastness dry	≥ 3 - 4
Wrijftechtheid droog • Solidité au frottement sec Reibungechtheit trocken • Solidità colori allo sfregamento a secco Solidez del color a la frotación en seco	
ISO 105 X12 2001 Rubbingfastness wet	≥ 3
Wrijftechtheid nat • Solidité au frottement humide Reibungechtheit nass • Solidità colori allo sfregamento umido Solidez del color a la frotación en húmedo	

(±) These details are approximate. Complete specification details and associated certificates together with tolerances applying to the above can be provided upon request. We reserve the right to improve technical specifications without prior notice. Due to method of manufacture perfect pattern and/or colour matching cannot be guaranteed. In cut-pile carpeting, in rare cases, shading pile reversal may occur without affecting its fitness for use. Shading/pile reversal can not be considered as a manufacturing or a material defect and will not affect the durability of the carpet. For other languages see: www.lano.com

