

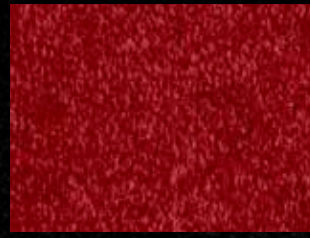
Godiva



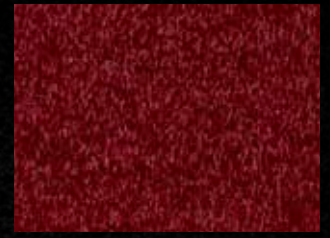
▲ KT: LGOD.0381 | 400 & 500 cm



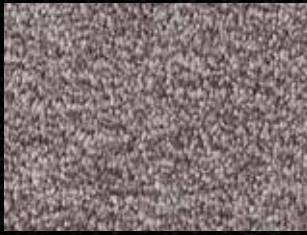
▲ KT: LGOD.0315 | 400 & 500 cm



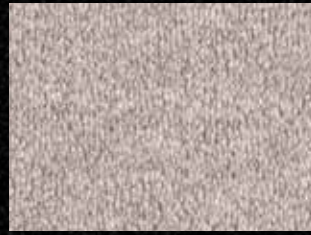
▲ KT: LGOD.0124 | 400 & 500 cm



▲ KT: LGOD.0104 | 400 & 500 cm



▲ KT: LGOD.0831 | 400 & 500 cm



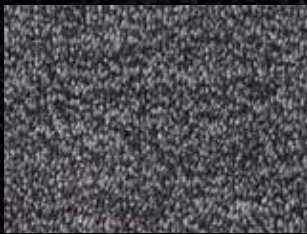
▲ KT: LGOD.0861 | 400 & 500 cm



▲ KT: LGOD.0151 | 400 & 500 cm



▲ KT: LGOD.0274 | 400 & 500 cm



▲ KT: LGOD.0821 | 400 & 500 cm



▲ KT: LGOD.0871 | 400 & 500 cm



▲ KT: LGOD.0184 | 400 & 500 cm



▲ KT: LGOD.0781 | 400 & 500 cm



▲ KT: LGOD.0864 | 400 & 500 cm



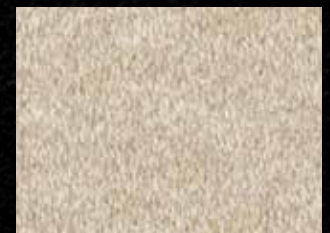
▲ KT: LGOD.0264 | 400 & 500 cm



▲ KT: LGOD.0764 | 400 & 500 cm



▲ KT: LGOD.0844 | 400 & 500 cm



▲ KT: LGOD.0254 | 400 & 500 cm



▲ KT: LGOD.0634 | 400 & 500 cm



▲ KT: LGOD.0531 | 400 & 500 cm



▲ KT: LGOD.0561 | 400 & 500 cm



▲ KT: LGOD.0244 | 400 & 500 cm

X

A touch of luxury.

Godiva

Secondary Backing **KT**
Rugtype • Envers
Rücken • Sottofondo • Reverse

Manufacturing process **1/10" cut pile**
Fabricagemethode • Technique de fabrication
Herstellungsart • Tecnica di fabbricazione • Técnica de fabricación

Pile composition **PA**
Pool Samenstelling • Nature du velours
Polmaterial • Composizione felpa • Composición de pelo

Primary backing **woven**
Tuftdoek • Premier dossier
Trägermaterial • Tela di supporto • Tela de soporte

Width **± 400 & 500 cm**
Breedte • Largeur
Breite • Altezza • Ancho

Effective pile height **± 6,5 mm**
Nuttige poolhoogte • Hauteur de velours utile
Tatsächliche Florhöhe • Spessore felpa utile • Altura de pelo

Total height **± 8,5 mm**
Totale dikte • Hauteur totale
Gesamthöhe • Spessore totale • Altura total

Number of knots/sqm **± 283.680**
Aantal noppen/m² • Nombre de points/m²
Noppenzahl/m² • Numero di punti/mq • Puntos de pelo/m²

Pile weight/sqm **± 900 gr**
Poolinzetgewicht/m² • Poids mis en oeuvre/m²
Poleinsatzgewicht/m² • Peso felpa/mq • Peso de pelo/m²

Total weight/sqm **± 2.020 gr**
Totaal gewicht/m² • Poids total/m²
Gesamtwicht/m² • Peso totale/m² • Peso total/m²

EN 13501-1 Fire behaviour **C_{fl}-s1**
Brandgedrag • Comportement au feu
Brennverhalten • Reazione al fuoco • Resistencia al fuego

EN 1307-2004 Classification **Class 23 / 32**
Classificatie • Classification
Klassifizierung • Classificazione • Clasificación al uso **Domestic Heavy**
Commercial General

ISO 140/8 1997 Impact sound insulation **± 27 dB**
Contactgeluidsisolatie • Isolation aux bruits d'impact
Trittschallverbesserungsmaß • Miglioramento acustico

ISO 354 Sound absorption α_s **± 0,41 (1000 Hz)**
Geluidsdempingsvermogen α_s • Absorption phonique α_s
Schallabsorptionsgrad α_s • Grado d'assorbimento acustico α_s

ISO 11654 Sound absorption α_w **± 0,2**
Geluidsdempingsvermogen α_w • Absorption phonique α_w
Schallabsorptionsgrad α_w • Grado d'assorbimento acustico α_w

DIN 52612 Thermal retention **± 0,091 m²/kW**
Warmteoorlaatweerstand • Résistivité thermique
Wärmedurchlaßwiderstand • Resistenza termica

TOG rating **± 0,91**

ISO 6356 2000 Teil 2: Permanently antistatic **< 2 kV**
Permanent antistatisch • Antistatique permanent
Permanent antistatisch • Antistatico permanente

ISO 6356 2000 Teil 2: Surface resistance RoT **≤ 10¹⁰ Ω**
Oppervlakteweerstand RoT • Résistance horizontale RoT
Oberflächenwiderstand RoT • Resistenza in superficie RoT

ISO 10965 1999 Teil 6: Vertical resistance RdT **≤ 10¹¹ Ω**
Doorgangswaerstand RdT • Résistance transversale RdT
Durchgangswiderstand RdT • Resistenza ai passaggi RdT

ISO 105 B02 2000 Lightfastness **≥ 6**
Lichtechtheid • Solidité à la lumière
Lichtechtheit • Solidità colori alla luce • Solidez del color a la luz

ISO 105 E01 2002 Waterfastness change in colour **≥ 4**
Waterechtheid verkleuring • Solidité à l'eau changement couleur
Wasserechtheit Änderung der Farbe • Solidità colori all'acqua cambio colore
Solidez color al agua cambio de color

ISO 105 E01 2002 Waterfastness staining **≥ 4**
Waterechtheid uitbloeding • Solidité à l'eau dégorgeement
Wasserechtheit anbluten • Solidità colori all'acqua sfumatura colore
Solidez color al agua pérdida de color

ISO 105 X12 2001 Rubbingfastness dry **≥ 4 - 5**
Wrijftechtheid droog • Solidité au frottement sec
Reibungechtheit trocken • Solidità colori allo sfregamento a secco
Solidez del color a la frotación en seco

ISO 105 X12 2001 Rubbingfastness wet **≥ 4 - 5**
Wrijftechtheid nat • Solidité au frottement humide
Reibungechtheit nass • Solidità colori allo sfregamento umido
Solidez del color a la frotación en húmedo

(±) These details are approximate. Complete specification details and associated certificates together with tolerances applying to the above can be provided upon request. We reserve the right to improve technical specifications without prior notice. Due to method of manufacture perfect pattern and/or colour matching cannot be guaranteed. In cut-pile carpeting, in rare cases, shading pile reversal may occur without affecting its fitness for use. Shading/pile reversal can not be considered as a manufacturing or a material defect and will not affect the durability of the carpet. For other languages see: www.lano.com



LANO NV - Venetielaan 33
B-8530 HARELBEKE
Floor carpets to use in
buildings

GUT 20894
BQA_QM5019_C_199460

A+ A B C

The Green signature of Lano Carpets