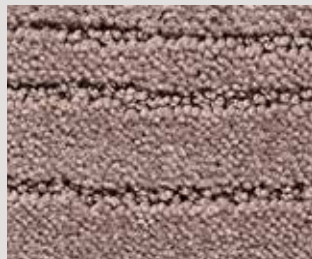


Carve Linea



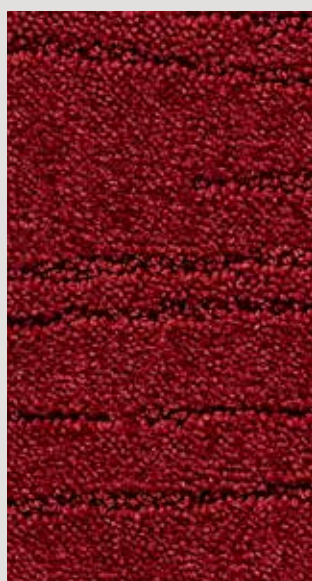
▲ FBP: **LCFB.0062** | 400 cm



▲ FBP: **LCFB.0251** | 400 cm



▲ FBP: **LCFB.0431** | 400 cm



▲ FBP: **LCFB.0122** | 400 cm



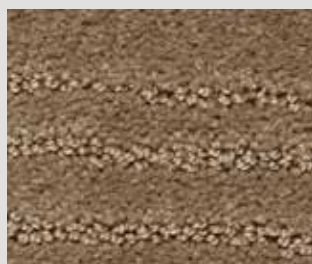
▲ FBP: **LCFB.0182** | 400 cm



▲ FBP: **LCFB.0410** | 400 cm



▲ FBP: **LCFB.0840** | 400 cm



▲ FBP: **LCFB.0261** | 400 cm



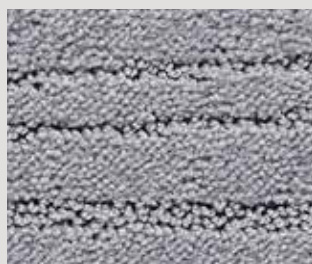
▲ FBP: **LCFB.0192** | 400 cm



▲ FBP: **LCFB.0821** | 400 cm



▲ FBP: **LCFB.0012** | 400 cm



▲ FBP: **LCFB.0852** | 400 cm



▲ FBP: **LCFB.0812** | 400 cm



▲ FBP: **LCFB.0722** | 400 cm



▲ FBP: **LCFB.0662** | 400 cm



▲ FBP: **LCFB.0802** | 400 cm

Carve Linea

Secondary Backing Rugtype • Envers Rücken • Sottofondo	FBP	ISO 354 Sound absorption α_s Geluidsdempingsvermogen α_s • Absorption phonique α_s Schallabsorptionsgrad α_s • Grado d'assorbimento acustico α_s	± 0,32 (1000 Hz)
Manufacturing process Fabricagemethode • Technique de fabrication Herstellungsart • Tecnica di fabbricazione	tufted, 1/10" cut loop	ISO 11654 Sound absorption α_w Geluidsdempingsvermogen α_w • Absorption phonique α_w Schallabsorptionsgrad α_w • Grado d'assorbimento acustico α_w	± 0,35
Pile composition Poolsamenstelling • Nature du velours Polmaterial • Composizione felpa	PA	DIN 52612 Thermal retention Warmtedoorlaatweerstand • Résistivité thermique Wärmedurchlaßwiderstand • Resistenza termica	± 0,147 m²/kW
Primary backing Tuftdoek • Premier dossier Trägermaterial • Tela di supporto	non woven	TOG rating	± 1,47
Width Breedte • Largeur Breite • Altezza	± 400 cm	ISO 6356 Teil 2 Permanently antistatic Permanent antistatisch • Antistatique permanent Permanent antistatisch • Antistatico permanente	< 2 kV
Effective pile height Nuttige poolhoogte • Hauteur de velours utile Tatsächliche Florhöhe • Spessore felpa utile	± 6,0 mm	ISO 6356 Teil 6 Surface resistance RoT Oppervlakteweerstand RoT • Résistance horizontale RoT Oberflächenwiderstand RoT • Resistenza in superficie RoT	≤ 10¹¹ Ω
Total height Totale dikte • Hauteur totale Gesamthöhe • Spessore totale	± 10 mm	ISO 10965 Teil 6 Vertical resistance RdT Doorgangswaerstand RdT • Résistance transversale RdT Durchgangswiderstand RdT • Resistenza ai passaggi RdT	≤ 10¹⁰ Ω
Number of knots/sqm Aantal noppen/m ² • Nombre de points/m ² Noppenzahl/m ² • Numero di punti/mq	± 204.880	ISO 105 B02 2000 Lightfastness Lichtechtheid • Solidité à la lumière Lichtechtheid • Solidità colori alla luce	≥ 5
Pile weight/sqm Poolinzetgewicht/m ² • Poids mis en oeuvre/m ² Poleinsatzgewicht/m ² • Peso felpa/mq	± 1.180 gr	ISO 105 E01 2002 Waterfastness change in colour Waterechtheid verkleuring • Solidité à l'eau changement couleur Wasserechtheit Änderung der Farbe • Solidità colori all'acqua cambio colore	≥ 3-4
Total weight/sqm Totaal gewicht/m ² • Poids total/m ² Gesamtwegicht/m ² • Peso totale/m ²	± 2.540 gr	ISO 105 E01 2002 Waterfastness staining Waterechtheid uitbloeding • Solidité à l'eau dégorgement Wasserechtheit anbluten • Solidità colori all'acqua sfumatura colore	≥ 3-4
EN 13501-1 Fire behaviour Brandgedrag • Comportement au feu Brennverhalten • Reazione al fuoco	B_{fl}-s1	ISO 105 X12 2001 Rubbingfastness dry Wrijfchtheid droog • Solidité au frottement sec Reibungechtheit trocken • Solidità colori allo sfregamento a secco	≥ 3-4
EN 1307-2004 Classification Classificatie • Classification Klassifizierung • Classificazione	Class 32 Commercial General	ISO 105 X12 2001 Rubbingfastness wet Wrijfchtheid nat • Solidité au frottement humide Reibungechtheit nass • Solidità colori allo sfregamento umido	≥ 3
ISO 140/8 1997 Impact sound insulation Contactgeluidsisolatie • Isolation aux bruits d'impact Trittschallverbesserungsmaß • Miglioramento acustico	± 31 dB	Ce produit s'inscrit dans la démarche HQE (F.D.E.S. selon la norme NF P01-10 disponible sur demande). F.D.E.S. = fiche de données environnementales et sanitaires.	HQE

(±) These details are approximate. Complete specification details and associated certificates together with tolerances applying to the above can be provided upon request. We reserve the right to improve technical specifications without prior notice. Due to method of manufacture perfect pattern and/or colour matching cannot be guaranteed. In cut-pile carpeting, in rare cases, shading/pile reversal may occur without affecting its fitness for use. Shading/pile reversal can not be considered as a manufacturing or a material defect and will not affect the durability of the carpet. For other languages see: www.lano.com

