



# norament<sup>®</sup> 926 castello

TIMELESS DESIGN WITH  
CONTEMPORARY SPIRIT

**nora**<sup>®</sup>  
by **Interface**<sup>®</sup>



# Made for eternity

If we can learn one thing from centuries-old architecture, it is that good things can last forever. Architectural landmarks have always been able to reinvent themselves alongside ever-evolving styles and build bridges across eras.

norament 926 castello is here to do the same for your space. Its timeless design, resembling limestone, is exciting and elegant – adding a touch of classical luxury to your environment. The material is resilient and robust enough to stand the test of time.



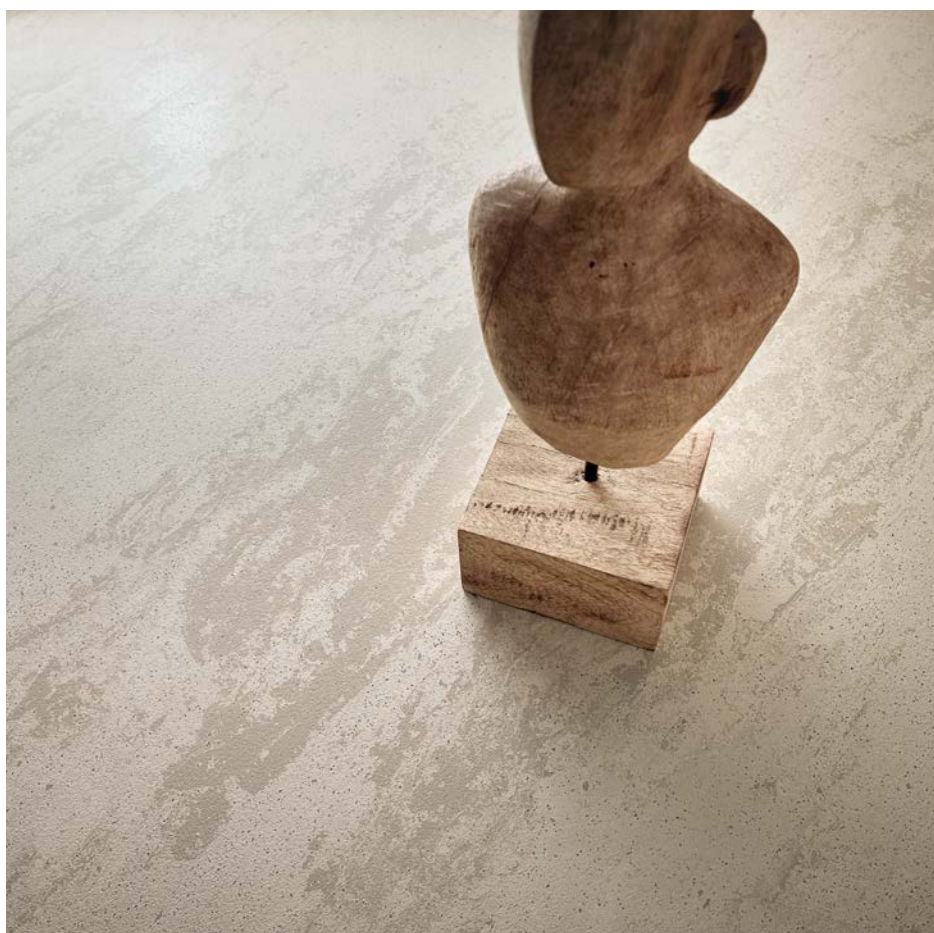
reddot winner 2021



# Modern natural design for demanding spaces

The design of norament 926 castello is natural and artfully avoids repetition. Much like natural stone, no two tiles look the same. Its lightly marbled appearance is reminiscent of limestone and matches the design of large, open spaces with a classic ambiance.

The visual features allude to the material's abilities to last. Its high resiliency makes it the ideal floor that gets a lot of traffic. From public buildings to art galleries, from educational institutions to grand hotels, this is the flooring made for highest performance. It will even withstand the rough conditions of a logistics area or a production facility.







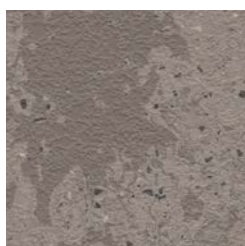


# The pure choice in neutral colours

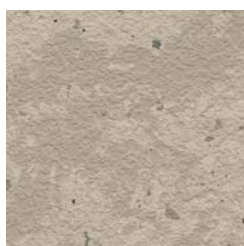
A warm, acoustic-improving alternative to natural stone was the inspiration behind this resilient rubber flooring. Eight timeless subtle, marbled colours with a slightly structured two-tone surface offer you a range that is sure to complement any building from modern to historical, adding a highly representative look.



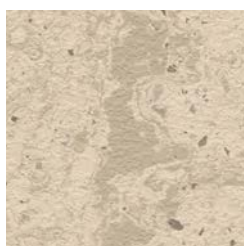
5351



5352




5353

 5354 5355 5356 5357

5358

## **norament 926 castello**

**Art. 3167**  8

□ ~1004 mm x 1004 mm



~3.5 mm

nora profile connection dimension: E + U

Variations in colour and design, even within one production batch, define the product's aesthetic character.



Also available as norament 926 castello nTx

Note: Additional information on nora® nTx can also be found at [ntx.nora.com](https://ntx.nora.com). Special colours are available on request.

Errors as well as misprints and changes reserved. No guarantee is given for the accuracy and completeness of the information. The product images in this document may differ from the original. This document is not a contractual offer and only serves to provide non-binding information.

The nora brand and all other registered trademarks used in this document are registered to the company, the country or to a company associated with nora systems GmbH. Other labels used here are trademarks of their respective owners.

Contact details, local branches or authorised retailers, as well as other information can be found at [www.nora.com](http://www.nora.com).

**Publisher**

nora systems GmbH

Höhnerweg 2-4

69469 Weinheim | Germany

[www.nora.com](http://www.nora.com)