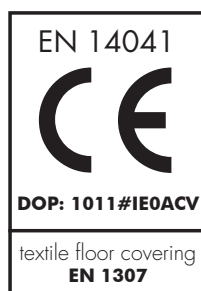



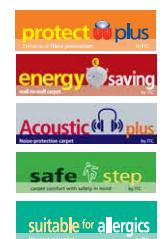
quartz new AB

| | | | |
|----------------------------------------------------------------------------------------------|------------------------------------------------------------------------------------------|--------------------------------------------------------------------------------------------------|----------------------------------------------------------------------------------|
| FABRICAGEMETHODE Getuft 1/10" lussenpool | MÉTHODE DE FABRICATION Tuftée 1/10" bouclé | HERSTELLUNGSVERFAHREN Getuftet 1/10" Schlinge | MANUFACTURING PROCESS Tufting 1/10" loop pile |
| POOLSAMENSTELLING 100% PA IMPREL® | COMPOSITION DU VELOURS 100% PA IMPREL® | POLMATERIAL 100% PA IMPREL® | PILE CONTENT 100% PA IMPREL® |
| TUFTDOEK geweven PP | SUPPORT PP tissé | TRÄGERMATERIAAL Bändchengewebe PP | PRIMARY BACKING woven PP |
| RUG Action Back | DOSSIER Double dossier synthétique | RÜCKENAUSRÜSTUNG Textilrücken | SECONDARY BACKING Synthetic backing |
| POOLGEWICHT ca. 540 gr/m ² | POIDS DU VELOURS ca. 540 gr/m ² | POLGEWICHT ca. 540 gr/m ² | PILE WEIGHT ca. 540 gr/m ² |
| TOTAAL GEWICHT ca. 1.800 gr/m ² | POIDS TOTAL ca. 1.800 gr/m ² | GESAMTGEWICHT ca. 1.800 gr/m ² | TOTAL WEIGHT ca. 1.800 gr/m ² |
| POOLHOOGTE ca. 3 mm | HAUTEUR DU POIL ca. 3 mm | POLHÖHE ca. 3 mm | PILE HEIGHT ca. 3 mm |
| TOTAAL HOOGTE ca. 6 mm | HAUTEUR TOTALE ca. 6 mm | GESAMTHÖHE ca. 6 mm | TOTAL HEIGHT ca. 6 mm |
| AANTAL NOPPEN ca. 220 000/m ² | NOMBRE DE POINTS ca. 220 000/m ² | NOPPENZAHL ca. 220 000/m ² | NUMBER OF KNOTS ca. 220 000/m ² |
| PERMANENT ANTISTATISCH <2 kV | ANTISTATIQUE PERMANENT <2 kV | PERMANENT ANTISTATISCH <2 kV | PERMANENTLY ANTISTATIC <2 kV |
| GELUIDSISOLATIE ISO 140-8: ca 22 dB delta L | ISOLATION AUX BRUITS D'IMPACT ISO 140-8: ca 22 dB delta L | TRITTSCHALLDÄMMUNG ISO 140-8: ca 22 dB delta L | SOUND INSULATION ISO 140-8: ca 22 dB delta L |
| GELUIDSABSORPTIE ISO 354: ca 0.20 alpha w | ABSORPTION PHONIQUE ISO 354: ca 0.20 alpha w | SCHALLABSORPTIONSGRAD ISO 354: ca 0.20 alpha w | SOUND ABSORPTION ISO 354: ca 0.20 alpha w |
| WARMTEDOORLAATBAARHEID 0,11 m ² K/W | RÉSISTANCE THERMIQUE 0,11 m ² K/W | WÄRMEDURCHLASSWIDERSTAND 0,11 m ² K/W | THERMAL RESISTANCE 0,11 m ² K/W |
| LICHTECHTHEID 5-6 | RÉSISTANCE À LA LUMIÈRE 5-6 | LICHTECHTHEIT 5-6 | LIGHT FASTNESS 5-6 |
| WATERECHTHEID 4-5 | RÉSISTANCE À L'EAU 4-5 | WASSERECHTHEIT 4-5 | WATER RESISTANCE 4-5 |
| BRANDKLASSE Brandklassement C _{fl} -s1 alleen bij volledige verkleving | CLASSEMENT FEU Classement feu C _{fl} -s1 uniquement en pose collée | BRANDVERHALTENSKLASSE Baustoffkl. C _{fl} -s1 nur wenn vollflächig verklebt | FIRE CLASS Fireristance C _{fl} -s1 only with full adhesion |
| | UPEC U3 P3 E1 C0 Homologation CSTB: 10/278 | | |

Colours and widths



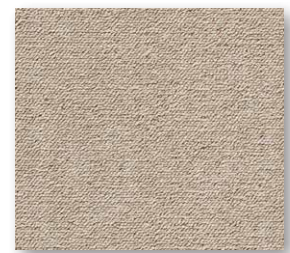
| Quartz | 12 | 18 | 28 | 34 | 36 | 42 | 43 | 54 | 75 | 92 | 95 | 99 |
|--------|----|----|----|----|----|----|----|----|----|----|----|----|
| ca 4m | . | . | . | . | . | . | . | . | . | . | . | . |
| ca 5m | . | . | . | . | . | . | . | . | . | . | . | . |

quartz new AB



▲ 34



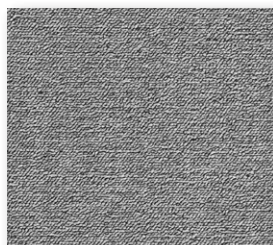
▲ 36



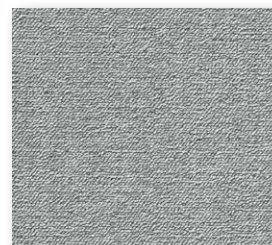
▲ 28



▲ 99



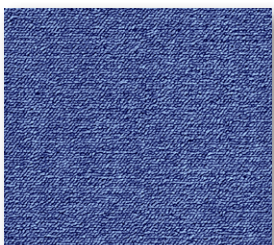
▲ 92



▲ 95



▲ 42



▲ 75



▲ 18



▲ 12



▲ 54



▲ 43