



Strata

Collection

atec2[®]
high tech flooring



2tec2[®]
high tech flooring

2TEC2 is a 100% Belgian company devoted to designing and producing high-tech woven flooring.

In addition to its focus on aesthetics, the company also highly values innovation. Every day, 2TEC2 strives to improve its products in terms of quality, functionality and sustainability.

"The passion for fibres, the love of colours and the determination to use eco-conscious materials are the foundations of our company's philosophy."

Strata collection

Introduction	2
Interwoven with nature	4
Silica	6
Chalk	7
Arkose	8
Shale	11
Coal	12
Pyrite	14
Azurite	17
Serpentine	18
Garnet	21
Collection overview	22
Installation Patterns	24



The mystical tranquillity of nature woven into your floor coverings.

The layers of the earth serve as inspiration for the Strata collection and are clearly incorporated into the design.

As a silent witness to our evolution, the stratification in rocks and stones creates a robust play of lines – a symbol of timeless progress. Strata's line motif lives and breathes: with endless variation, the natural pattern creates fascinating markings on the floor.

Interwoven with nature

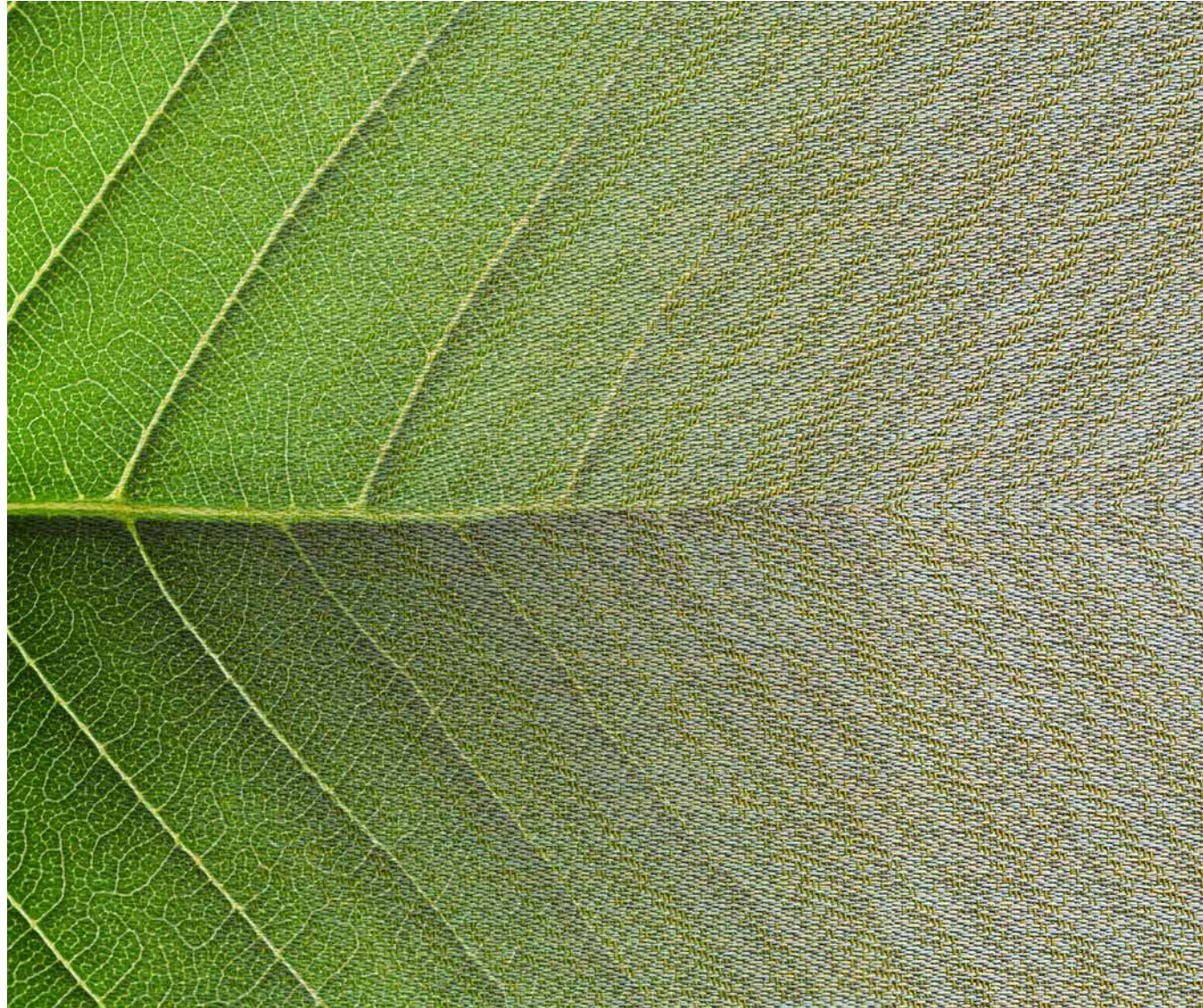
2TEC2 is proud to introduce you to its first **Bio-based collection.**

We are replacing fossil fuels in our yarns with innovative plant-based raw materials. Thanks to this step, the woven top layer of 2TEC2 contains **renewable materials**, thus making your flooring more sustainable.

In addition to this important green evolution, the felt backing of our flooring is composed of **70% recycled PET bottles**. This acoustic underlayer reduces sound up to 19 dB.

Our flooring is designed for circularity and is fully recyclable.

Discover our entire sustainability journey on 2tec2.com.





Plank 20 x 75 cm (7.87" x 29.53")
Installation pattern: Random Staggered A/B

Chalk

Imagine the soft, dusty patterns left by chalk on a contrasting surface, which is what this neutral yet elegant pattern evokes.

With its bright yet understated hues, this motif elevates any interior design without dominating the space.

Silica

With its mesmerizing crystal-like beauty and healing properties, silica minerals are highly sought after bringers of balance. This Silica pattern injects sparkle and harmony into your interior, evoking a sense of calm and content.



Plank 20 x 75 cm (7.87" x 29.53")
Installation pattern: Random Staggered A/B



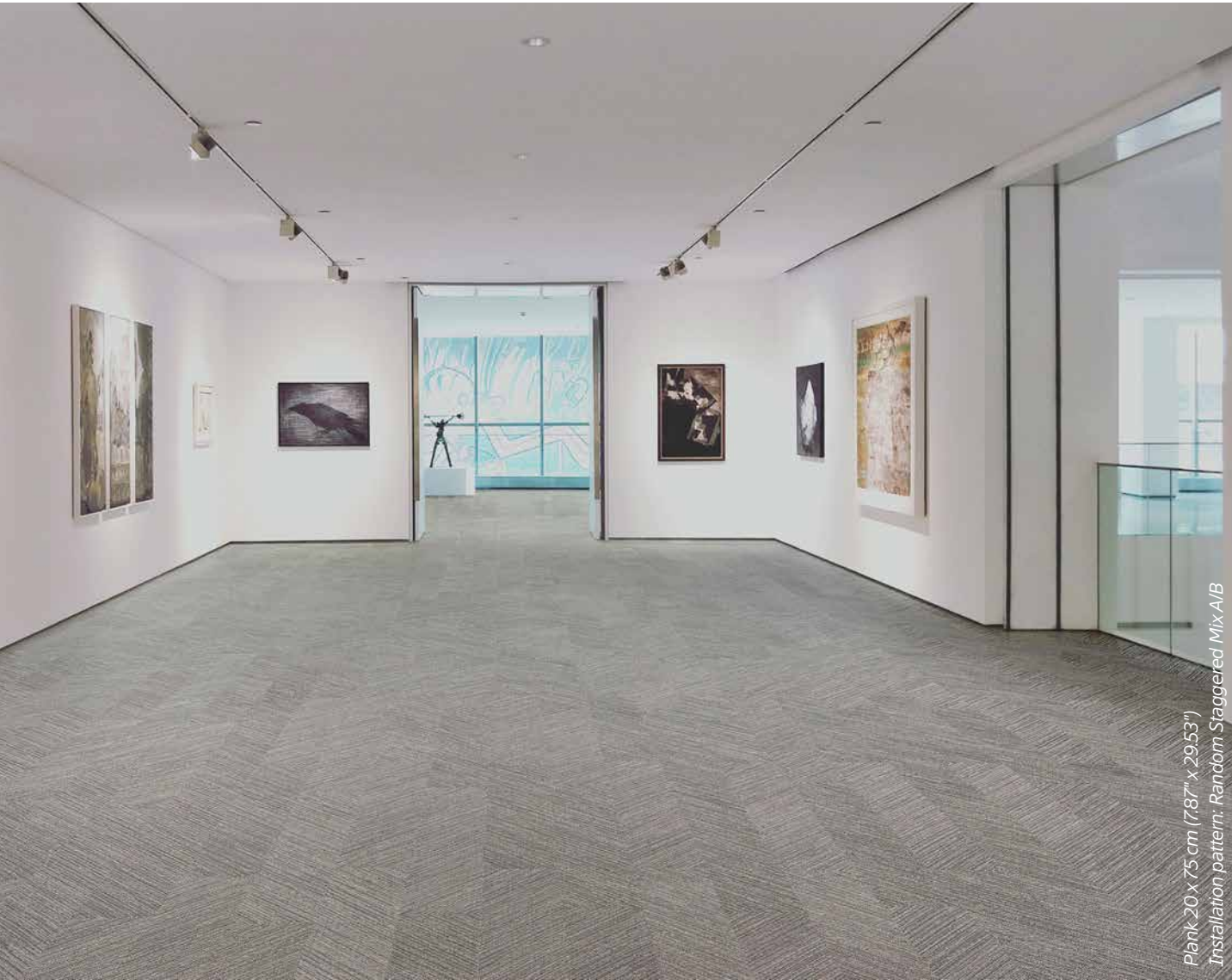
Arkose

The distinctive granular character of arkosic sandstone is like a beautiful mosaic of tiny quartz and rock fragments.

This was the inspiration for the Arkose pattern that mimics the coarse texture of the beautiful sandstone by interchanging light and dark hues, evoking a feeling of vibrancy and movement in your interior design.

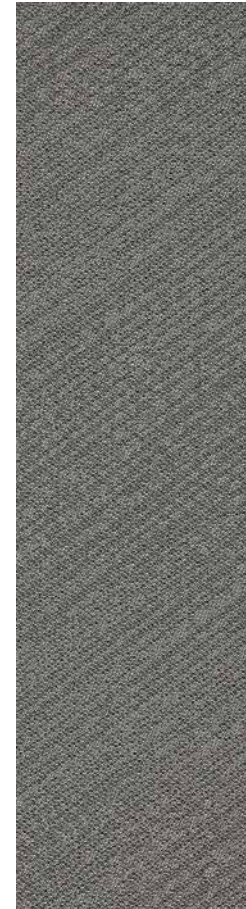


Plank: 20 x 75 cm (7.87" x 29.53")
Installation pattern: Random Staggered AA/BB



Plank 20 x 75 cm (78.7" x 29.53")
Installation pattern: Random Staggered Mix A/B

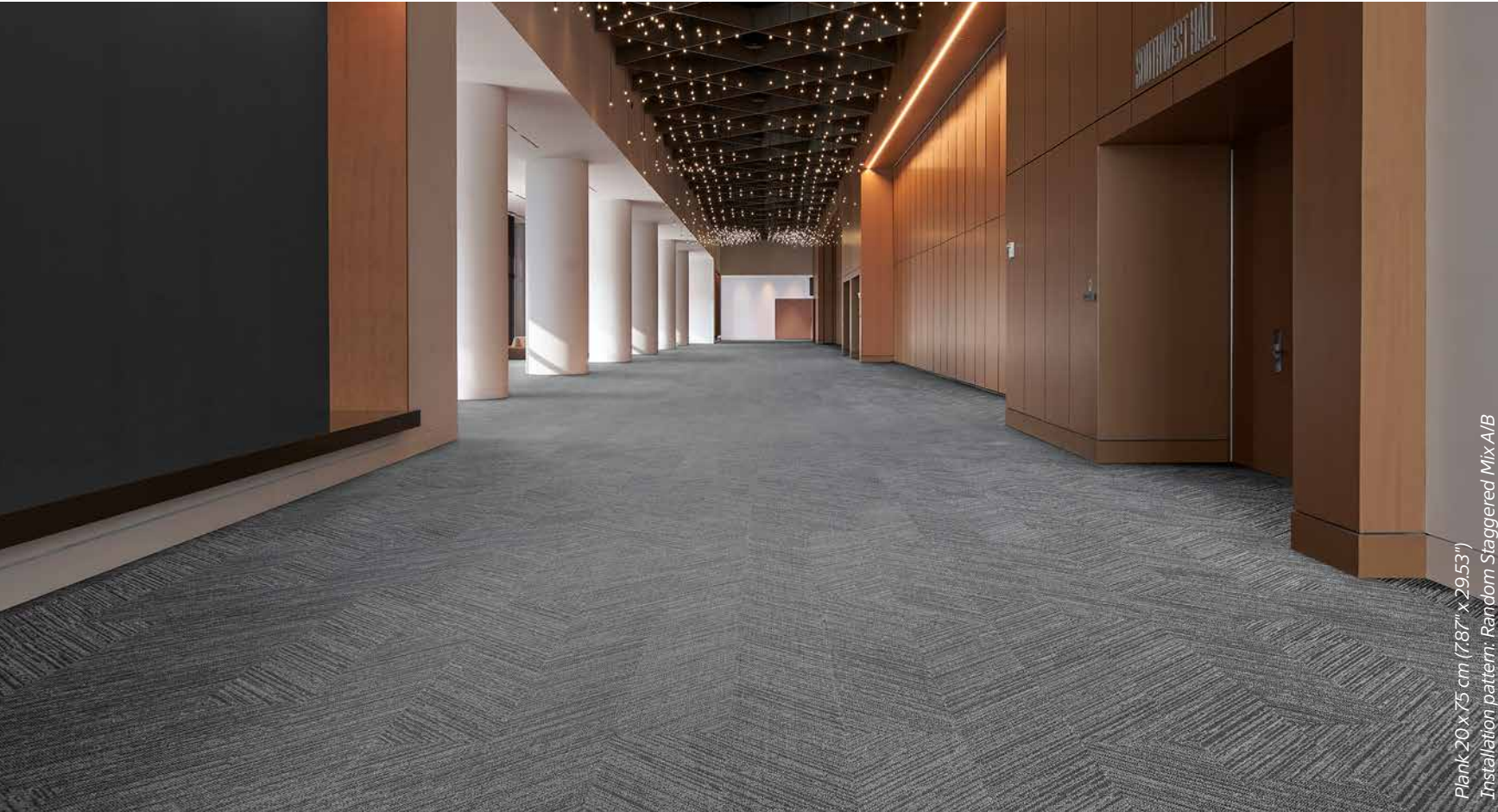
Shale



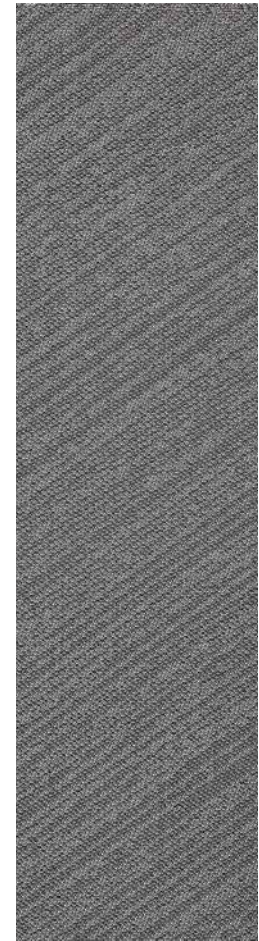
Plucked from the mystique depths of lakes, lagoons and rivers, the peculiar character of the shale stone is further enhanced by its unique texture of uneven layers. Shale evokes the singular hypnotic pattern of the stone it is named after by interlacing neutral light and dark hues, steeping your interior in spellbinding movement and texture.

Coal

Like soft strokes of charcoal on paper, Coal livens up your interior by smoothly blending dark and light shades and bringing them together in a vivacious pattern, creating a sense of gentle movement that transforms your interior into an intriguing work of art.



Plank 20 x 75 cm (7.87" x 29.53")
Installation pattern: Random Staggered Mix A/B





Plank 20 x 75 cm (7.87" x 29.53")
Installation pattern: Random Staggered Mix A/B



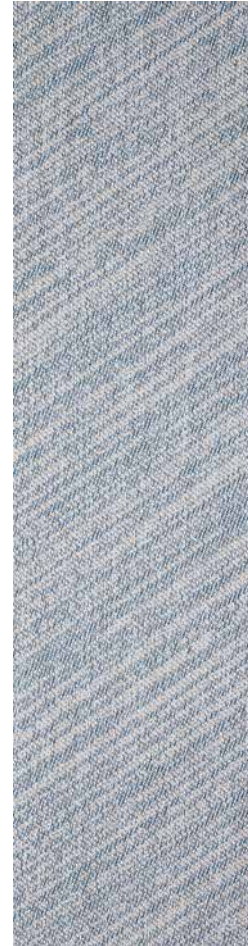
Pyrite

Ancient Greeks gave the shiny, brass-colored mineral pyrite its name to mean 'stone that creates sparks', which is exactly what this pattern does.

This intricate motif of interwoven golden and light hues bathes your interior in warmth and decadence, adding a regal touch to every room.



Plank: 20 x 75 cm (7.87" x 29.53")
Installation pattern: Random Staggered AA/BB



Azurite

The deep blue pigment of the azurite mineral has been used for centuries to liven some of the world's most historic artwork, from Ancient Egypt throughout the Renaissance. Today, the color remains as enticing as ever.

Combining captivating blue with lighter hues, Azurite transforms your interior into a singular work of art.



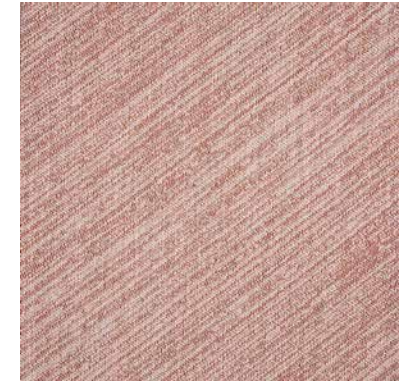
Plank 20 x 75 cm (7.87" x 29.53")
Installation pattern: Random Staggered A/B

Serpentine

Serpentine minerals owe their name to the Latin for 'serpent rock', a reference to the vibrant green scales of snakes. The minerals were used to embellish architectural settings through centuries, and this tantalizing pattern continues the tradition with its symbiosis of dark green and lighter hues that lends a classic touch to your interior.



Tiles 50 x 50 cm (19.69" x 19.69")
Installation pattern: Diamond A/B



Garnet

For over 5000 years, garnet minerals have been worn as gemstones due to their striking blood-red color and supposed rejuvenating properties.

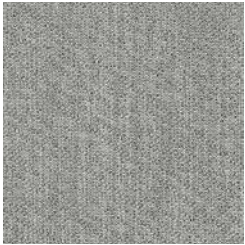
Our Garnet motif extends that trend to interior design, infusing rich red hues with specks of lighter colour to breathe warmth and fire into your interior.

Collection overview

Available in:
Planks 20 x 75 cm (7.87" x 29.53")
Tiles 50 x 50 cm (19.69" x 19.69")



Silica



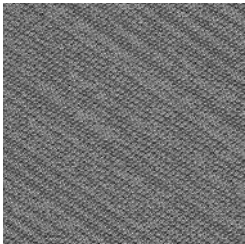
Chalk



Arkose



Shale



Coal



Pyrite



Azurite



Serpentine



Garnet



Tiles 50 x 50 cm (19.69" x 19.69")
Installation pattern: Diamond A/B

Installation Patterns

Strata's line motif lives and breathes: with endless variation, the natural pattern creates fascinating markings on the floor.

This vibrant collection can be installed in various ways, creating a unique geometric play of lines: diagonal, crossing, in a visual herringbone pattern or diamond-shaped.

Just as in nature, the possibilities are endless.

Planks and Tiles - Designs A and B*

The tiles and planks of the Strata collection come in 2 variations:

- A with upward line design
- B with descending line design

Tile A

Tile B



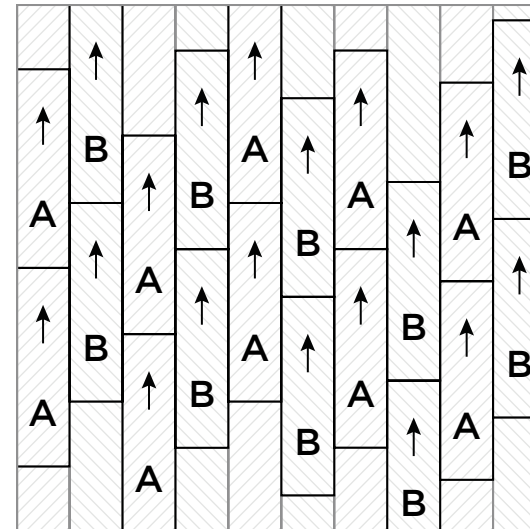
Plank A

Plank B



Installation pattern:

Random staggered A/B - Plank 20 x 75 cm (7.87" x 29.53")



*To create the different installation patterns, orders must contain 50% A and 50% B planks or tiles.

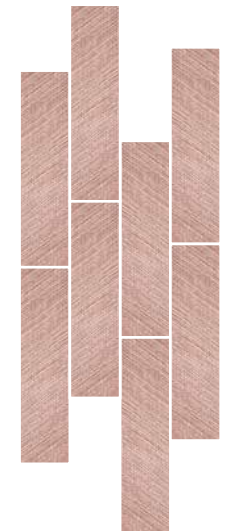
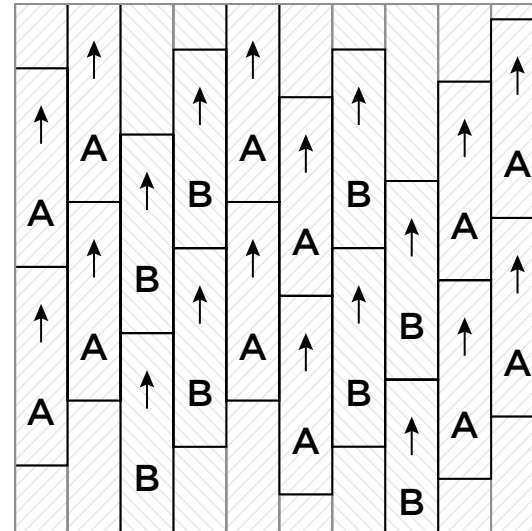
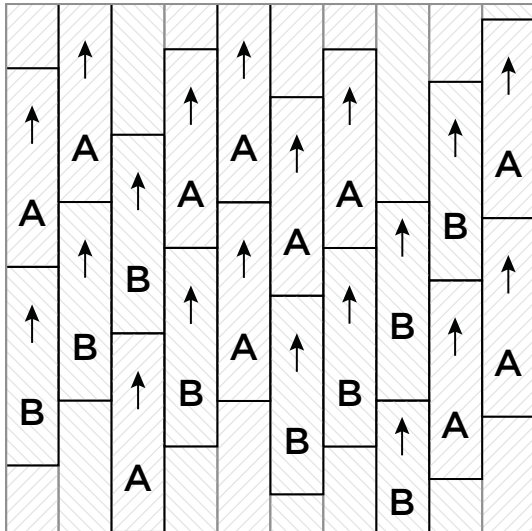


Installation pattern:

Random staggered Mix A/B - Plank 20 x 75 cm (7.87" x 29.53")

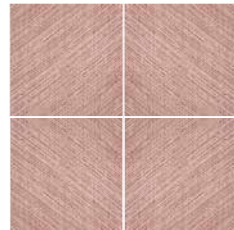
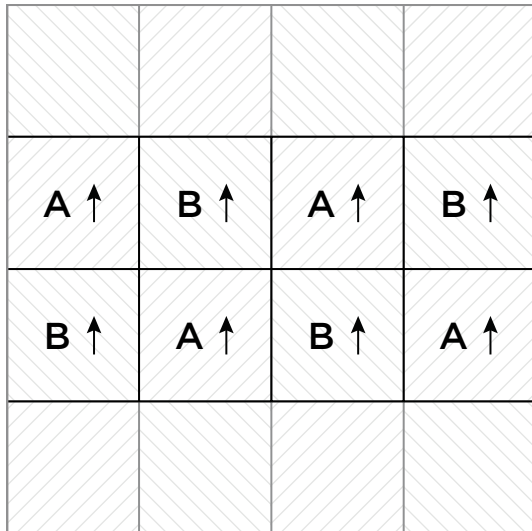
Installation pattern:

Random staggered AA/BB - Plank 20 x 75 cm (7.87" x 29.53")

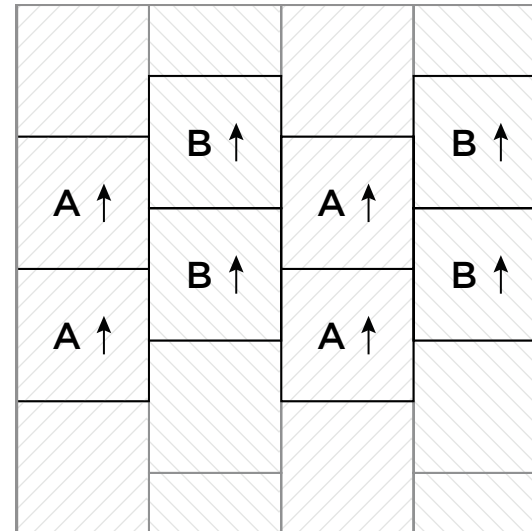




Installation pattern:
Diamond A/B - Tile 50 x 50 cm (19.69" x 19.69")



Installation pattern:
Ashlar A/B - Tile 50 x 50 cm (19.69" x 19.69")





Strong and long-lasting

- Extremely robust
- Resists office chairs & heavy traffic
- Long life span & UV-resistant



Acoustic sound absorption

- 70 % walking noise reduction
- 19 dB impact sound reduction



Sustainable footprint

- Bio-based top layer
- Felt backing made of recycled PET
- Designed for circularity: fully recyclable
- Suitable for projects according to BREEAM, LEED & WELL Building Standard®



High quality & high comfort

- 100% designed & made in Belgium
- Excellent underfoot comfort
- Antibacterial, mould-free & anti-allergic properties



Hygienic and easy to clean

- Stain resistant & waterproof
- Maintenance with clear water, no chemicals



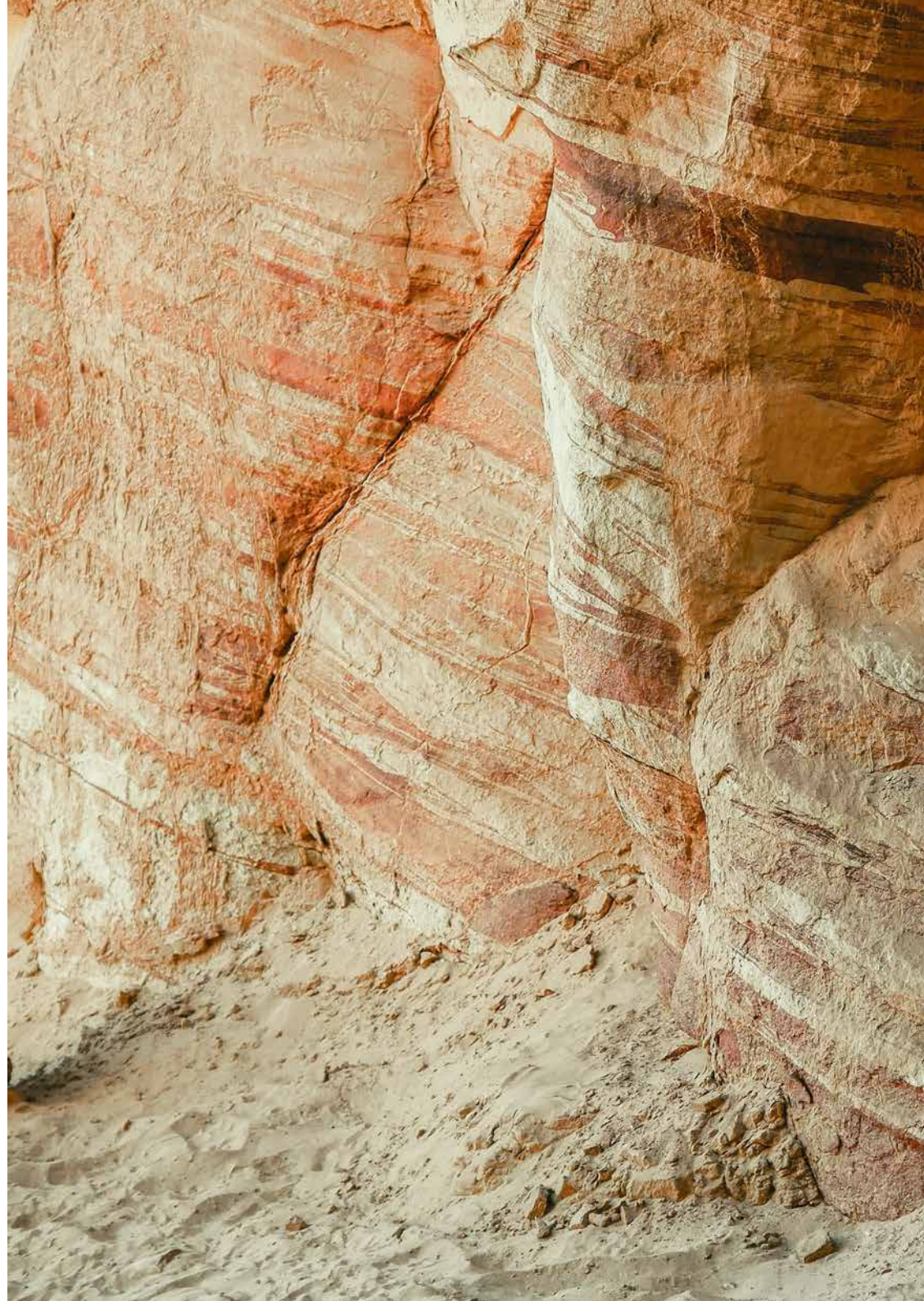
High tech, high design

- High-end look, full design flexibility
- Tiles & planks
- 2TEC2 Play tiles in various shapes

Headquarters and showroom
(BY APPOINTMENT)

Chaussée d'Aelbeke 284
7700 Mouscron
+32 56 85 47 47
sales@2tec2.com

2tec2.com





2tec2[®]
high tech flooring