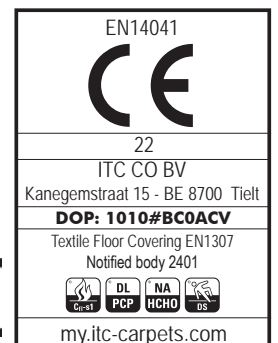


# Pro Nature

CONSTRUCTION	Flat woven
STRUCTURE	Tissé à plat
STRUKTUR	Flachgewebe
STRUCTUUR	Vlak geweven
PILE MATERIAL	100% PP
COMPOSITION DU VELOURS	
POLMATERIAL	
POOLMATERIAAL	
PILE WEIGHT	Ca. 1.100 gr/m <sup>2</sup>
POIDS DU VELOURS	
POLEINSATZGEWICHT	
POOLGEWICHT	
TOTAL WEIGHT	Ca. 1.635 gr/m <sup>2</sup>
POIDS TOTAL	
GESAMTGEWICHT	
TOTAAL GEWICHT	
TOTAL HEIGHT	Ca. 5,4 mm
EPAISSEUR TOTALE	
GESAMTHÖHE	
TOTAAL DIKTE	
TUFT DENSITY	Ca. 70 400/m <sup>2</sup>
NOMBRES DE POINTS	
NOPPENZAHL	
AANTAL PUNTEN	
CLASSIFICATION	EN 1307
CLASSEMENT	33 - LC1
KLASSIFIKATION	
CLASSIFICATIE	
CASTOR CHAIR SUITABILITY	EN 985
CHAISE À ROULETTES	A: intensive use
STUHLROLLENEIGNUNG	
ROLSTOELGESCHIKTHEID	
STAIR SUITABILITY	EN 1963
ESCALIERS	A: intensive use
TREPPENEIGNUNG	
TRAPPENGESCHIKTHEID	
PERMANENTLY ANTISTATIC	ISO 6356
ANTISTATIQUE PERMANENT	< 2 kV
PERMANENT ANTISTATISCH	
PERMANENT ANTISTATISCH	
IMPACT NOISE RATING	ISO 140-8
ISOLATION PHONIQUE	18 dB ΔLw
TRITTSCHALLVERBESSERUNG	
GELUIDSISOLATIE	
SOUND ABSORPTION	ISO 354
ABSORPTION PHONIQUE	0.15 Qw
SCHALLABSORPTIONSGRAD	
GELUIDSABSORPTIE	

THERMAL RESISTANCE	ISO 8302
RÉSISTANCE THERMIQUE	0.052 m <sup>2</sup> K/W
WÄRMEDURCHLASSWIDERSTAND	
WARMTEDOORLAATWEERSTAND	
FASTNESS TO LIGHT	ISO 105-B02
SOLIDITÉ A LA LUMIÈRE	≥ 7
LICHTECHTHEIT	
LICHTECHTHEID	
COLOUR FASTNESS TO WATER	EN ISO 105-E01
SOLIDITÉ À L'EAU	≥ 4-5
WASSERECHTHEIT	
WATERECHTHEID	
RUBBING FASTNESS	EN ISO 105-X12
SOLIDITÉ AU FROTTEMENT	≥ 4
REIBECHTHEIT	
WRIJFECHTHEID	
FIRE RESISTANCE	EN 13501-1
COMPORTEMENT AU FEU	Cfl-s1 if glued
BRENNVERHALTEN	
BRANDGEDRAG	
NUMBER OF COLOURS	24
NOMBRES DE COULEURS	
ANZAHL FARBEN	
AANTAL KLEUREN	
WIDTH	EN ISO 3018
LARGEUR	ca. 400 cm
BREITE	
BREEDTE	

PERMANENTLY ANTISTATIC	ISO 6356
ANTISTATIQUE PERMANENT	< 2 kV
PERMANENT ANTISTATISCH	
PERMANENT ANTISTATISCH	
IMPACT NOISE RATING	ISO 140-8
ISOLATION PHONIQUE	18 dB ΔLw
TRITTSCHALLVERBESSERUNG	
GELUIDSISOLATIE	
SOUND ABSORPTION	ISO 354
ABSORPTION PHONIQUE	0.15 Qw
SCHALLABSORPTIONSGRAD	
GELUIDSABSORPTIE	



# Pro Nature

---

## Salix



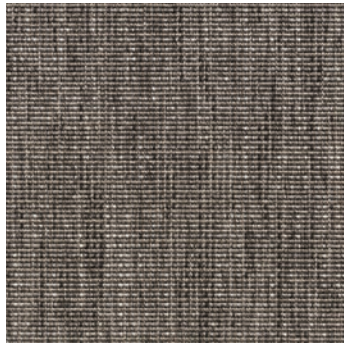
6302 92



6302 95



6302 98



6302 80



6302 78

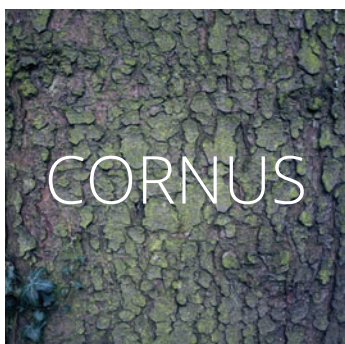


6302 68

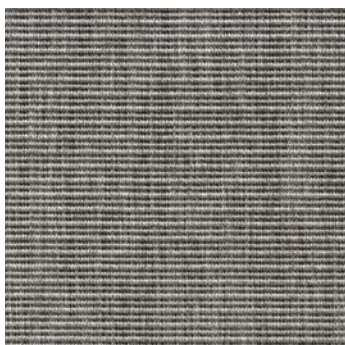
# Pro Nature

---

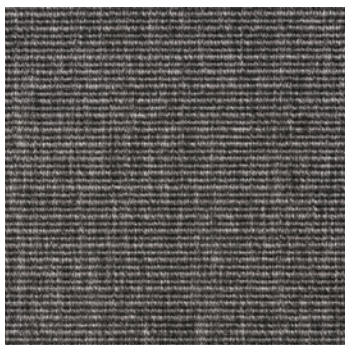
## Cornus



6339 92



6339 95



6339 98



6339 80



6339 78

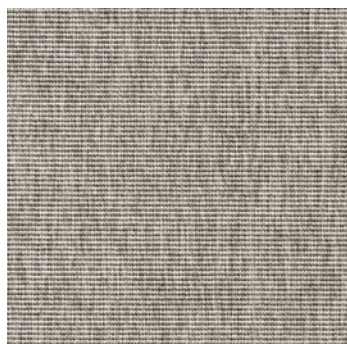


6339 68

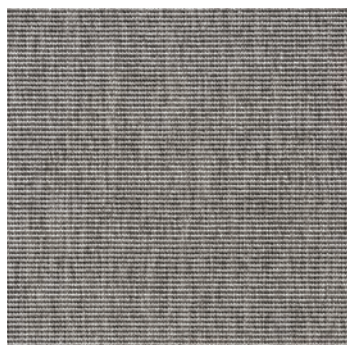
# Pro Nature

---

## Robinia



6300 92



6300 95



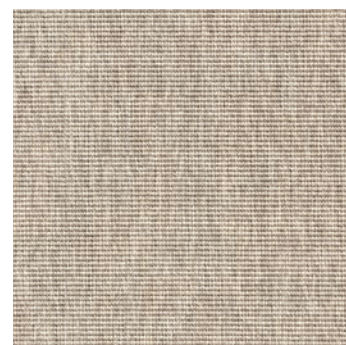
6300 98



6300 80



6300 78

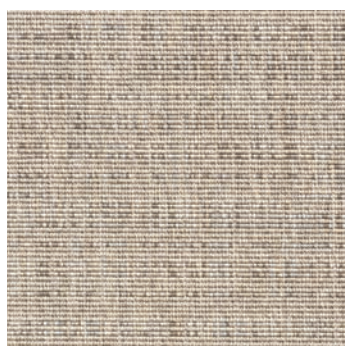


6300 68

# Pro Nature

---

## Betula



6335 68



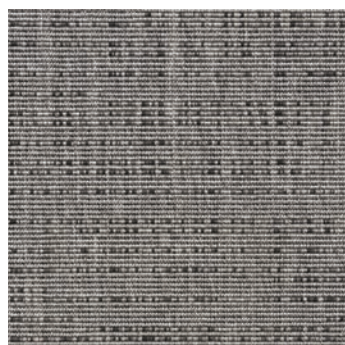
6335 78



6335 80



6335 98



6335 95



6335 92