



TAPISOM

**TAPISOM 600 DESIGN**

Made in France

Tapisom 600 Design – Références en stock / References in stock



Maille 00001



Patina 00002



Patina 00001



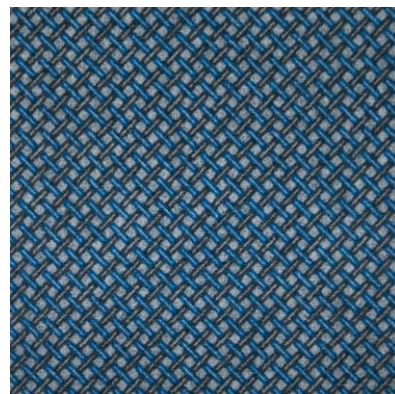
Patina 00008



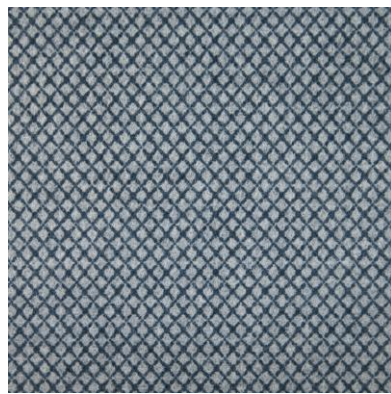
Patina 00005



Tamis 00003



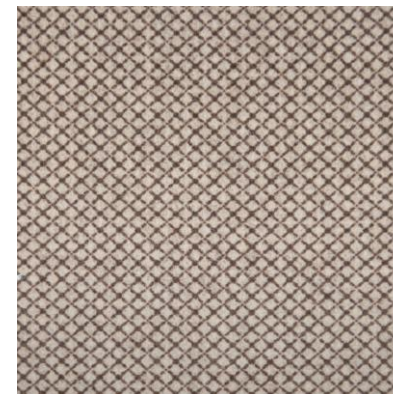
Tamis 00001



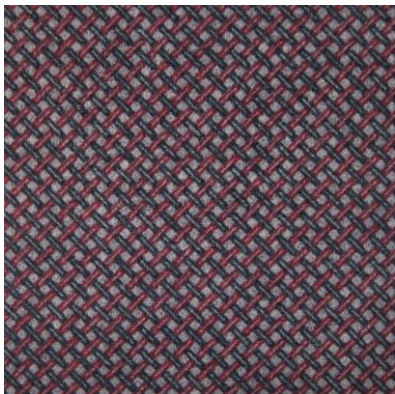
Lace 00004



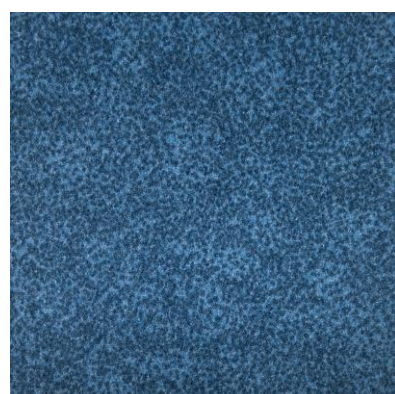
Lace 00013



Lace 00012



Tamis 00002



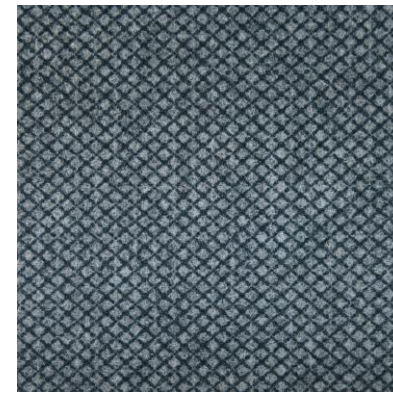
Suedine 00012



Suedine 00001



Suedine 00006



Lace 00002



**TAPISOM SUEDINE MAILLE**

416092009-00001





Patina 00005

**TAPISOM SUEGINE DESIGN**

416082009-00005

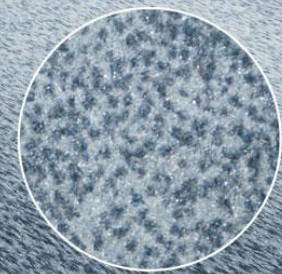
416082009-00008



Patina 00008



Patina 00005







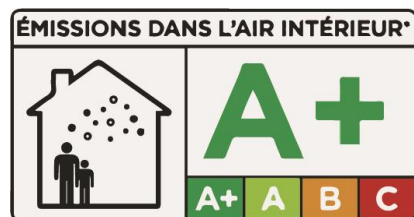
Caractéristiques	Tapisom 600 Design
Origine	France
Composition fibre – Fibre composition	100% Polyamide Imprimé – 100% Printed Solution dyed
Nature de l'envers - Backing	Fibres 100% recyclées – 100% recycled fibres
Poids de fibres – Weight of yarn	400 g/m <sup>2</sup>
Epaisseur – Thickness	4,4 mm
Masse totale – Total weight	1100 g/m <sup>2</sup>
Résistance Feu – Fire rating	BflS1
Résistance des couleurs – Colour fastness	≥ 5/8
Bruit de choc – Impact noise reduction	$\Delta L_{(w)}$ 19 dB
Absorption acoustique – Absorption	$\alpha_w = 0,10$ (H)
Résistance électrostatique – Electrostatic res.	≤ 10 <sup>8</sup> Ω
Environnement – Environment	LEED – HQE – Exigences GUT

## En quelques mots / In a few words

**Fabrication française** (Sedan, Ardennes) / **French production** (Sedan, Ardennes)



- \* Format 2x40ml (rouleaux de 80m<sup>2</sup>) / Size 2x40lm (rolls of 80sqm)
- \* Envers fibres recyclé / Recycled fibre backing
- \* Haute résistance / High resistance
- \* Facilité de pose et d'entretien / Easy to install and maintain
- \* Processus de fabrication respectueux de l'environnement / Eco friendly process of production



Répond à la démarche  
**LEED HQE**



**U<sub>3S</sub>P<sub>3</sub>E<sub>1</sub>C<sub>0</sub>**

